

2020 Annual Report

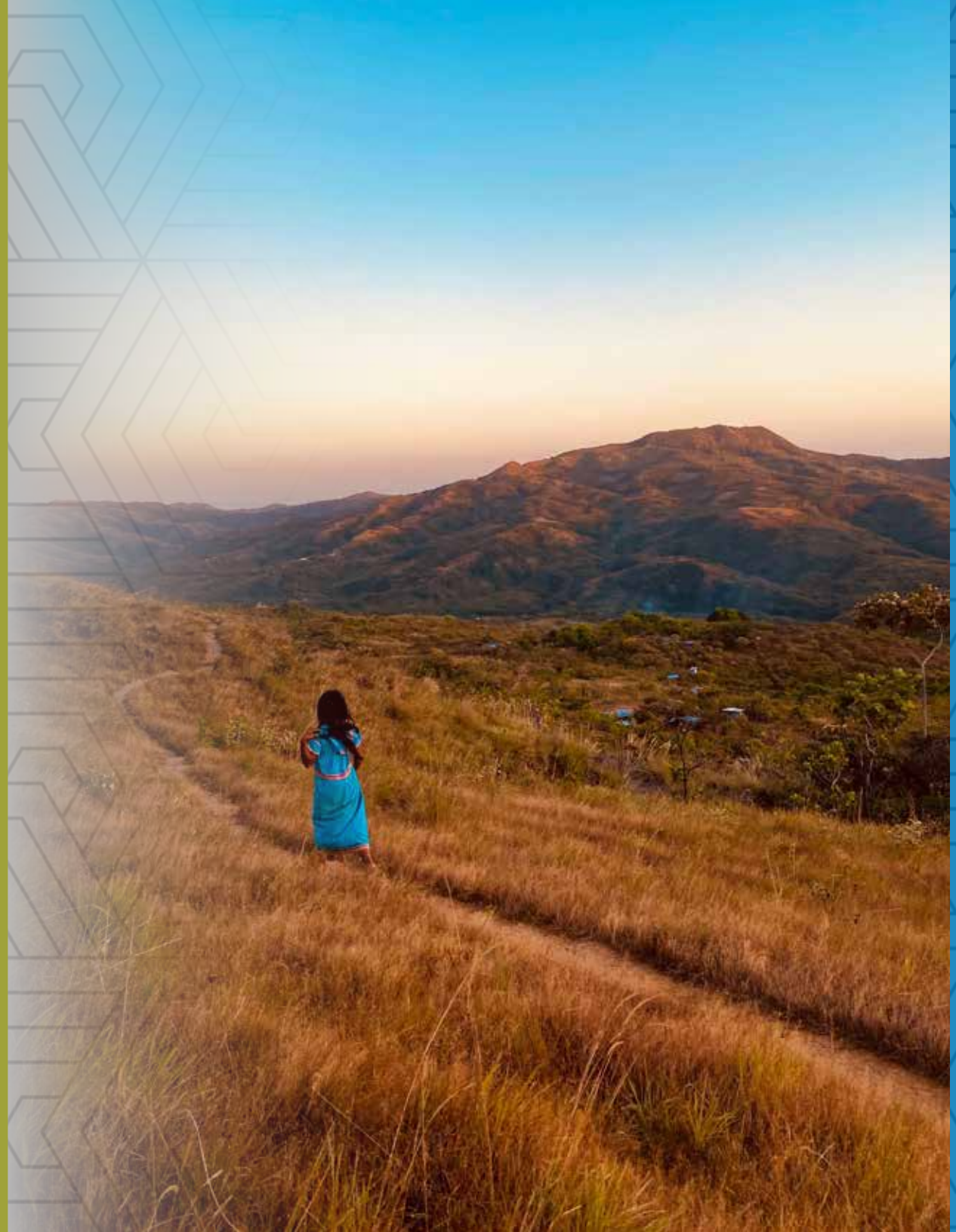


TABLE OF CONTENTS

Message from WEFTA President	1
Our Mission	2
2020 Collaborators/Partners	3
Where We Work	4
Legend	5
WASH in HCF	6
Circuit Rider Program	7
Project Activity.....	8
Panama	9
Ethiopia	10
Tanzania	12
Kenya	14
Mexico	15
Bolivia	17
Peru	19
Honduras	20
Other Activity	21
Impact Summary	26



2020

Dear Friends and Supporters of WEFTA,

The year 2020 proved to be a year of learning how to accomplish what was on our agenda in a way that was very different than originally planned. The year started out routinely with a scheduled January trip to Panama for assessment of projects in several communities. By March, proposed site visits to Ethiopia, Mexico, Bolivia, and Honduras were reluctantly abandoned as everything changed with the unwelcome entrance to center stage of a global pandemic.

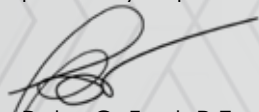
Fortunately, thanks to technology, our in-country work was able to continue. By hosting Zoom meetings with participants from around the world, using Google Earth mapping, and deploying cameras with Geo locate capabilities, WEFTA was able to keep track of what was happening on the ground as we helped solve problems from our offices at home. Construction projects in Ethiopia, Tanzania, and Bolivia were all accomplished by having our in-country partners play a more critical role working with communities to ensure that water and wastewater projects were completed safely and effectively. As a result of our newly implemented long-distance project management process, planned expansions of our circuit rider programs became more crucial than ever. Another unintended consequence was that WEFTA projects were often forced to shift focus to water and sanitation for healthcare, and not just for drinking! WEFTA became more dedicated to working on hospital and healthcare projects as the complete lack of water for everyday handwashing and for prevention of Covid-19 in these facilities became very apparent.

While learning and implementing these technical skills does not replace the personal connections that make this work so valuable, using these tools in combination with our in-country relationships increased the number of people that could be involved, improved the quality and success rate of the projects, and resulted in a better quality of life for the people we remain committed to serve.

In 2021, we will continue to expand our professional connections, strengthen our partnerships, and work towards finding solutions that help ensure indigenous communities in Latin America and Africa have access to safe water and sanitation in an environmentally responsible manner. By providing support for water and sanitation projects as well as for the global WASH in Healthcare Facility movement we can help improve the quality of life and empower the communities we work with.

There were many valuable lessons learned through the experiences of 2020, and where travel to Latin America and Africa for many are not yet possible, we will effectively continue to assist less fortunate communities with critical water and sanitation infrastructure that most of us take for granted.

Thank you for all your support and participation in the past and going forward. Your assistance makes it possible for us to continue making connections, empowering communities, and positively impacting lives.



Peter G. Fant, P.E.
President



OUR MISSION

Our mission is to engage with people and partners to improve water, sanitation, and hygiene resources for the benefit of communities and the environment.

2020 COLLABORATORS/PARTNERS



GLOBAL WATER
2020



Thank you to all our strategic partners, donors, and supporters!



WHERE WE WORK

Bolivia*
Colombia
El Salvador
Ethiopia*
Guatemala
Honduras*
Kenya
Mexico*
Panama
Peru*
Tanzania*

*Completed WEFTA
project(s) or active
progress during 2020



LEGEND OF SYMBOLS



WASH in HCF symbol indicates projects where WEFTA is working with strategic partners to increase Water, Sanitation, & Hygiene (WASH) resources for Healthcare Facilities (HCFs). HCFs in the developing world often lack access to water and sanitation making the jobs of HCF staff very difficult and the care for patients a challenge. By adding water, sanitation, and hygiene to HCFs the lives of all the people using the facility are positively impacted.



POSITIVE IMPACT symbol provides the number of lives impacted by one of our projects. We combine the number of people directly and indirectly impacted to get to the total number of people impacted by the project. For example, when a water project is completed in a village the total number of beneficiaries of the project make up the number of lives directly impacted. When a water project serves a HCF the number of people directly impacted are the people who work in the facility while the patients who use the facility make up the total number of people indirectly impacted. We add those two numbers together to get our total number of lives impacted.



PROJECT IN NEED OF FUNDING symbol indicates a project is still in need of funding. This means we are actively fundraising for the project to cover all the costs. Often, we plan projects in phases to be able to start the project with an initial grant, then actively fundraise for the next phases. This allows us to put a project into motion and start to see results. Results and photos of the project progress are a great way to seek additional donors to help change the many lives of those impacted by these efforts.

WASH IN HCF

One in four healthcare facilities around the world lacks basic water services, impacting over 2 billion people, according to the WHO and UNICEF Joint Monitoring Programme for Water Supply, Sanitation and Hygiene (JMP). The Report finds that one in five healthcare facilities has no sanitation service, impacting 1.5 billion people.

To improve these findings, WEFTA collaborates with strategic partners to evaluate healthcare facilities (HCFs) that lack access to water, sanitation and hygiene (WASH) resources, primarily water supply and wastewater treatment. There is a critical need for WASH resources in healthcare facilities throughout all regions WEFTA serves.

In 2020, WEFTA completed multiple WASH in healthcare facility projects and continued to work on efforts in progress in Tanzania, Ethiopia and Mexico.



CIRCUIT RIDER PROGRAM



Since 2012, WEFTA has supported in-country technical specialists, known as circuit riders, who provide community services related to one of our water and/or sanitation projects. These services consist of project feasibility assessment, on-site project construction management, post-construction follow-up, and water committee & operator training on system operation, maintenance, and management. WEFTA has active circuit rider programs in Bolivia, Panama, and Honduras and we are currently working closely with our Partners to expand the program for implementation in Ethiopia and Kenya.

WEFTA circuit riders are individuals with exceptional WASH knowledge and experience, and an ability to work directly at the community or system level. The circuit rider program is designed to be entrepreneurial in nature where the circuit rider can provide technical assistance to multiple systems in the region and charge the system committees for the services provided. WEFTA provides the circuit riders with a stipend as well to ensure our projects see these same services, but it is our vision that circuit riders will become self-sufficient over time based on the critical services they provide.

PROJECT ACTIVITY





In January, Tim Wellman (WEFTA Technical Volunteer) and Waterlines team traveled to Panama for post construction follow-up and assessment of ongoing and potential projects.

These site visits determined that many of the communities in the Comarca Ngöbe-Buglé and Bocas del Toro regions of Panama, have grown to exceed the supply of the current water systems. These regions are home to the Ngöbe-Buglé people, Panama's largest indigenous group, living scattered along the forested boundaries in undeveloped tracts of land where they survive on subsistence agriculture. The need to improve access to reliable water for the households, schools and health clinics is critical.

We are currently seeking funds for a proposed water system renovation project to increase water source and storage capacity for these communities.

PANAMA



ETHIOPIA

We are grateful for our long-time relationship with Village Health Partnership (VHP) as we continue to work together on projects for Water, Sanitation and Hygiene (WASH) in healthcare facilities in Ethiopia.

Through collaborative efforts with VHP, multiple projects supporting WASH initiatives were completed early in 2020. In the West Omo Zone of rural Ethiopia, the Bachuma Hospital Well Project was completed in March. This project provided safe water to staff and patients from the surrounding communities.

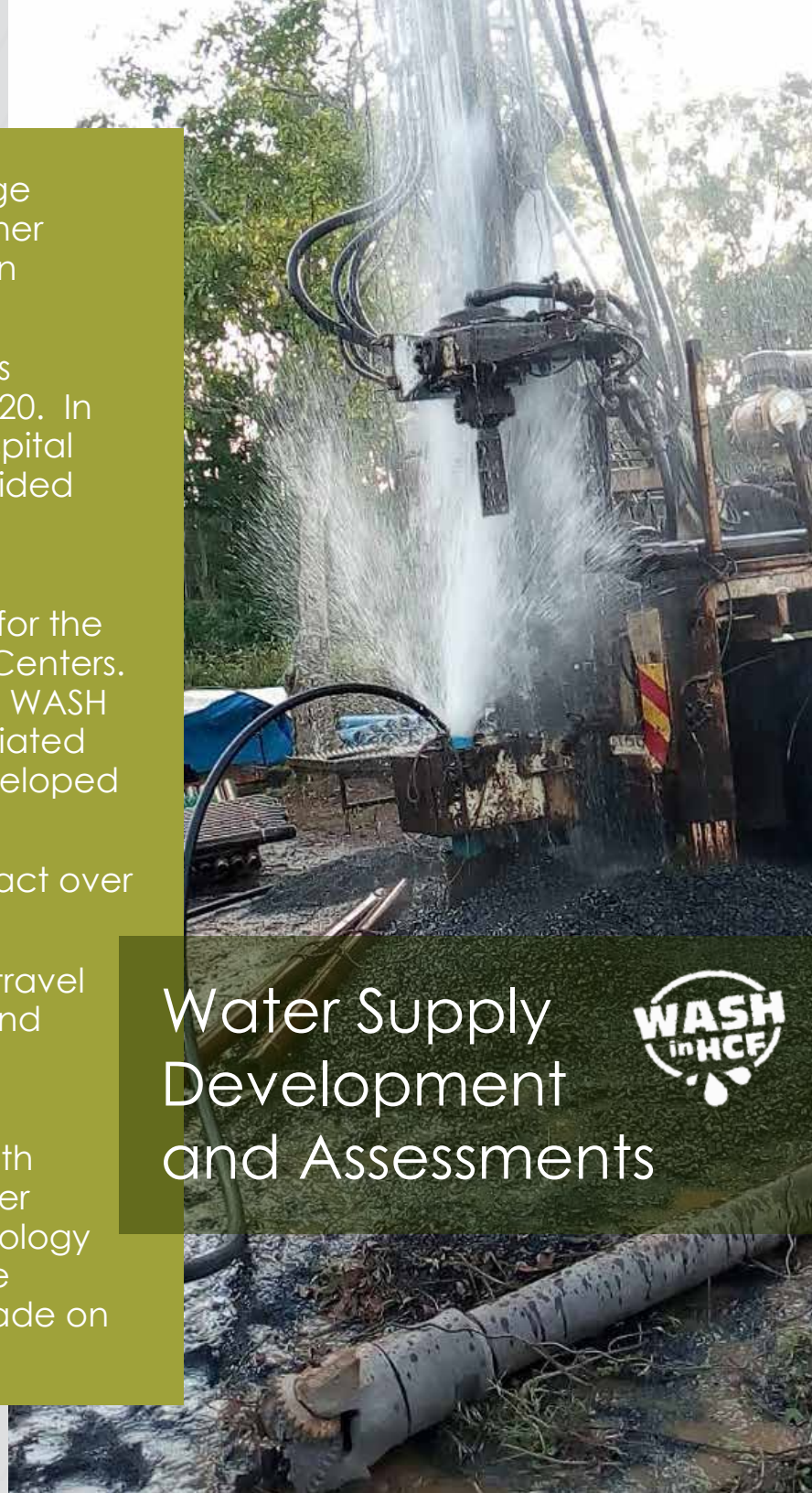
In addition, water supply assessments were performed for the Maji District Hospital and the Tuligit and Kibbish Health Centers. These assessments provide valuable information on the WASH status of these healthcare facilities and the costs associated with project upgrades. Designs are currently being developed for access to safe water for these healthcare facilities.

Access to safe reliable water for these facilities will impact over 500,000 lives.

As the Coronavirus tightened its grip on the world and travel restrictions were put in place, the need for on-the-ground support by in-country partnerships was accelerated.

Connections were made and new partnerships were developed. With this emerged priceless relationships with Geologist Stuart Smith, Principal Partner of Ground Water Science, and Hydrogeologist and Professor of Hydrogeology at Addis Ababa University, Tilahun Azagegn, PhD. These relationships have been instrumental in the progress made on projects in Ethiopia in 2020.

Water Supply Development and Assessments



St. Mary's Water Supply Improvements



Also in Ethiopia this year, in coordination with our partners Daughters of Charity of St. Vincent de Paul International Project Services (DOC IPS), we provided oversight for well drilling, well development and improved water distribution for St. Mary's Laboratory/Health Clinic located in Addis Ababa.

This project is in its final phase and will provide daily access to safe water for over 4,000 staff and students of the Daughters of Charity Compound, benefiting over 10,000 people per year from the communities and programs the laboratory/clinic serves.

POSITIVE
IMPACT

Over
10,000
Lives

In August 2020, a water supply project was completed for Masanga Centre, located in the north western part of Tanzania, which includes the Bikiri Mama Wa Tumaini Health Centre, DREAM Program, Sisters' Convent, the Church, St. Catherine Laboure Day & Boarding School, Association for Termination of Female Genital Mutilation (AFTGM), Lindalva VTC, Gorong'a Secondary School and Masanga Primary School. It has a population of approximately 2,000 people. The health facility treats over 344 patients each month serving the surrounding communities with a population of over 40,000 people with outpatient and inpatient services, surgery, maternity services, ultrasound, HIV/ AIDS treatment, laboratory services, home care, outreach and mobile clinics.

Through collaborative efforts, WEFTA, Daughters of Charity International Projects Services (DOC IPS), and Sanitation and Water Action (SAWA) the water supply project for Masanga Centre was successfully completed directly impacting over 6,000 people projected every year.



Masanga Centre Water Supply Improvements



TANZANIA

St. John's Hospital Lugarawa Water & Wastewater Improvements



By December 2020, construction of the water supply and wastewater system for the St. John's Hospital was more than 50% complete. St. John's Hospital is located in Lugarawa, 800 km southwest of Dar es Salaam, and is the only resource for medical matters within 100 km radius.

The completed project will supply water and wastewater daily to roughly 2,200 people directly at the hospital, the church, and the schools in the village. These institutions serve the entire village and the people in the surrounding communities, impacting over 25,000 people per year.

A photograph showing two healthcare workers in a red building. One worker in a light blue shirt is pushing a gurney with a patient on it, while another worker in a white lab coat stands nearby. The patient is covered with a white sheet. The building has a red wall and a blue roof.

POSITIVE
IMPACT

Over
25,000
Lives

KENYA

In collaboration with in-country partners, *Olotepesi Company Limited*, a local Kenyan WASH NGO, a water project for the community of Rangau located in the Rift Valley Province of Kenya, is on the horizon. The proposed project will expand the existing multi-household water system of 10 houses to the adjacent 200+ houses in the system service area. This will include expanding water storage capacity with an additional 2,500-gallon elevated tank, new buried distribution piping to the service area, and household taps.

This expansion will help provide reliable water service 24 hours a day eliminating the need for the household members (primarily women and children) to spend hours collecting or fetching water. This expansion will improve the quality of life, making it possible for these family members to spend more time with their families and increase school attendance.

We are currently seeking funds to complete this project.

Olotepesi Water Project



POSITIVE
IMPACT

Over
1,000
Lives

**\$ PROJECT
IN NEED of
FUNDING**

WEFTA in coordination with the Daughters of Charity IPS has completed the water supply component of this Water and Wastewater System project for Hospital San Carlos located in Altamirano. The design for the waste water treatment system has been completed and materials have been purchased. Additional funding is still needed to coordinate final construction for completion of this project.

The Hospital was built in 1969 and serves the indigenous communities living in and around the Central Highlands and Eastern Mountain regions of Chiapas, Mexico. This nonprofit hospital is run by the Daughters of Charity of St. Vincent de Paul and serves approximately 20,000 people annually.

With improved access to potable water the Hospital staff and patients have a secure water supply free of waterborne disease. Upon completion of the planned wastewater treatment system, the wastewater will be safely treated before discharging to the river.

Hospital San Carlos Water Supply and Wastewater Treatment



POSITIVE
IMPACT

Over
20,000
Lives



MEXICO

WEFTA engineers continued to work with community members of Ejido de Ixcan to seek funds to construct a water system improvement project to include the following:

- Completion of the existing well
- Construction of a new water storage tank
- Installation of transmission line from the well to the proposed water storage tank
- Construction of a new water distribution system
- Installation of a chlorinator to ensure the water is safe to drink

The indigenous community of Ejido de Ixcan is located at the confluence of the Rio Ixcan and the Rio Jatate, near the border of Guatemala, in Chiapas, Mexico. It has about 180 homes with a population of approximately 1,000 people. In addition to residences, Ixcan has several churches, a healthcare facility, and a primary school. Most families work in subsistence agriculture, growing corn, beans, and vegetables. Average family income is well below poverty line (approximately \$2-4 per day).



POSITIVE
IMPACT

Over
1,000
Lives

PROJECT
IN NEED OF
\$ FUNDING

BOLIVIA

In early 2020, our in-country partners, Suma Jayma, completed the fabrication and installation of wells and hand pumps for 350 indigenous families in the Altiplano region of Bolivia. Partnering with Wheaton Franciscan Sisters for financial support, this two-year program provided access to safe water for over 1,750 people.

The success of this water supply program drew interest from the families in Kalla Centro, also located at over 13K feet above sea level on the high, flat mountainous plateau known as the Altiplano. Continuing the efforts to provide impoverished Bolivian families with access to safe water, a new project has been launched with Suma Jayma to install wells and hand pumps for 48 families of Kalla Centro.

We are currently seeking funding to complete this project.

POSITIVE
IMPACT

Over
1,750
Lives



BOLIVIA

Located in the Valleys of Santa Cruz sits Samaipata, a small town in the eastern foothills of the Bolivian Andes.

WEFTA is working with the local municipality water board members to provide assistance for capacity building on utility management, and strategic planning. Proposed projects to construct a new water storage tank and assess the wastewater system are in discussion for 2021.

In central Bolivia on the outskirts of Cochabamba, our partners, ConSES, in collaboration with Wheaton Franciscan Sisters, continued to build and install ecological bathroom systems.

This pilot program developed by ConSES, was launched in 2018 and continues to progress as they work with local NGOs and periurban communities in Bolivia to bring an effective solution to sanitation problems.



PERU

POSITIVE IMPACT

Over
300
Lives

WEFTA partner/volunteer Steve Reichert and his family joined the community of Ccotataqui during an inauguration ceremony held March 15, 2020 for the success of their new water project. Ccotataqui is a small community of approximately 60 families located high above sea level at an elevation of over 13,000 feet in the Sacred Valley of Peru.

Through collaborative efforts with our partners, Suma Jayma, from neighboring country of Bolivia, design of an irrigation system for the community of Ccotataqui was completed. Reservoirs were constructed, and waterlines were installed late 2019. The system was tested in early 2020 after the reservoirs filled and settled following the rainy season.

HONDURAS

For the communities of Llano Largo, Guadalupe and Quioco in Honduras, a multi-community water and sanitation project is in its final phase. The water supply portion of the project, including a small reservoir and 15 miles of gravity transmission line, was completed in 2019. The system storage tanks and chlorination units for each of the communities were completed in early 2020. Unfortunately, in mid-November the Category 5 *Hurricane Iota* hit the region. Llano Largo's portion of the project suffered extensive damage due to flood waters and landslides. They are currently mobilizing to rebuild. In December, the community of Guadalupe completed the construction of the distribution system in the village. The community of Quioco is making progress and hope to have the distribution system in place early 2021.

Additional funding is still needed to complete the construction of the sanitation systems (washing stations, bathrooms, and latrine units) for the 300 families benefited by the project. The total population benefiting from the completed La Iguala Water and Sanitation project is 1,800.

In addition to our projects, at the request of World Vision, WEFTA assisted with evaluations and technical expertise for existing projects in the communities of Ojona and La Angostura.

POSITIVE
IMPACT

Over
1,800
Lives



OTHER ACTIVITY



COVID-19 RESPONSE

Through our connections, WEFTA helped facilitate the deployment of 1,800 medical grade face shields to health service ministries working on the frontline with COVID-19 in Nigeria, India and Bolivia managed by the Daughters of Charity of St. Vincent de Paul.

These efforts to protect those working in the frontline and reduce the spread of the disease among these undeveloped communities, was collaboratively carried out through our partnerships with the STEMbassadors of Ventura CA, Daughters of Charity of St. Vincent de Paul International Project Services, and DHL.



COVID-19 RESPONSE



Access to safe water and sanitation is critical for proper handwashing and hygiene to reduce the spread of disease. As coronavirus spreads around the globe, the indigenous communities in developing countries face unprecedented risk. These close-knit communities with multi-generational families often living together do not have access to safe water and sanitation which is critical for proper handwashing and hygiene.

Travel may be temporarily restricted however, we have continued to work with our in-country partners by collaborating remotely on planning, designing, and reviewing water and sanitation projects thereby providing communities with the infrastructure they need to stay safe during the pandemic crisis.



New Executive Director

In November, the WEFTA Board of Directors appointed Tim Wellman as Executive Director overseeing all operations of the organization. Tim has been a long-time volunteer of WEFTA and stepped into his new role with over 22-years of technical experience working with communities, committees, volunteers, governments, and non-governmental organizations on community-based water resource management and protection.

We are grateful for Tim's leadership and look forward to reaching new goals together as we continue to empower communities and change more lives every day.

The Implementers



2020 Trailblazer

In publications released by Global Water 2020 in July and December, WEFTA was recognized as a Trailblazer and Implementer for water, sanitation, and hygiene (WASH) projects in Latin America and Africa.

In collaboration with Village Health Partnership, Daughters of Charity International Project Services and SAWA, our recent projects have provided access to safe reliable water and sanitation to over 40,000 people who are served by the healthcare facilities in the communities we work.

Global Water 2020 is a three-year advocacy and facilitation initiative designed to accelerate progress toward water access and security for all people in developing countries. Among other areas, they focus on the lack of safe drinking water, sanitation, and hygiene (WASH) in healthcare facilities worldwide.

WE REMAIN COMMITTED TO THE COMMUNITIES WE SERVE

We are committed to the success of our ongoing work with less-fortunate communities in Latin America and Africa to find solutions for reliable and sustainable water and sanitation systems. We remain dedicated to promoting WASH in healthcare facilities and continue to work together with local leaders and representatives, healthcare workers, and community members on construction of water and wastewater projects in the countries we serve.

We have multiple ongoing projects and new projects on the horizon for 2021 in all 11 countries we currently serve, as well as opportunities in new regions including Mozambique and Paraguay.

WEFTA will continue to positively impact and empower the communities we are privileged to work with and change lives.



2020



THANK YOU!

TOGETHER
WE HAVE
POSITIVELY
IMPACTED
OVER 95,000
LIVES
IN 2020!

Making connections. Empowering communities. Changing lives.



Water Engineers for the Americas & Africa

2904 Rodeo Park Drive East #100, Santa Fe, NM 87505

505-570-2210 • wefta.net

