

# San Miguelito, El Salvador Water System Rehabilitation Project 2026 Photo Update Report



April 2026 Update

# Activities completed to date (April 2026)



Marogil spring box renovation (the renovation resulted in higher spring flow!)



Repaired transmission line from the Marogil spring to the Marogil supply tank.



Interconnection of the Marogil system with the Boledor water supply tank #2. Excess water from the Marogil system will flow to the lower Boledor system where there is higher water demand than water supply.



PVC pipe was delivered and stockpiled at one of the water committee member's home.



Gravel for making concrete was delivered and stockpiled.



PVC unions, valves, tees, and reducers were also delivered.



Clean river sand was also delivered.



Spring box renovation at the Marogil Spring.



Water committee and community members work to clean the spring box gravel filters and clean the area where spring water enters the spring box.



New spring box lids are constructed to replace the old broken lids.



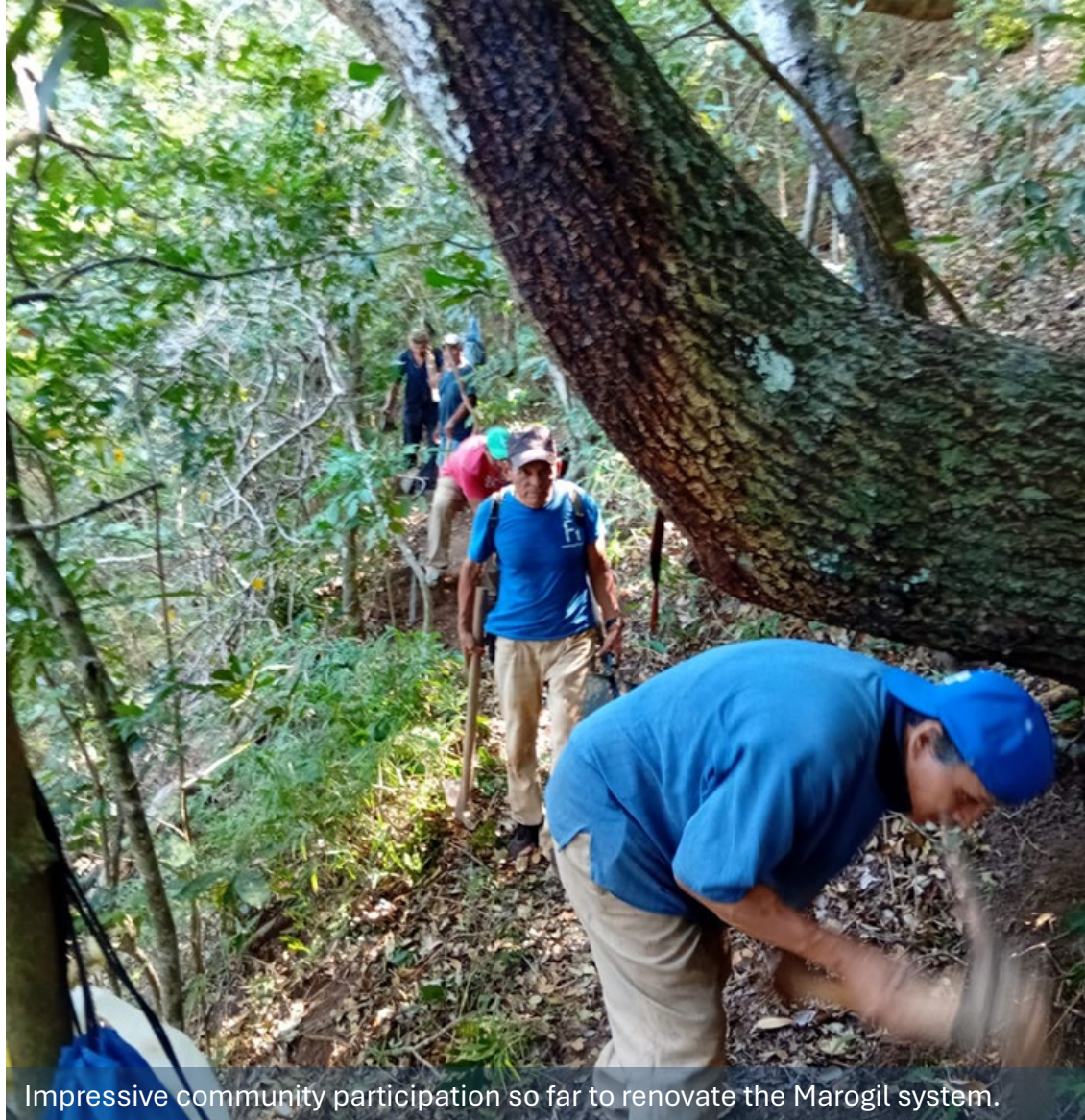
The spring box clean out valve and transmission valves were replaced, and a new valve box was constructed.



Water committee and community members dig to repair and replace portions of the transmission line from the Marogil Spring to the water supply tank.



Tree roots and land movement made repairing the transmission line imperative. Digging through the area was not easy either!



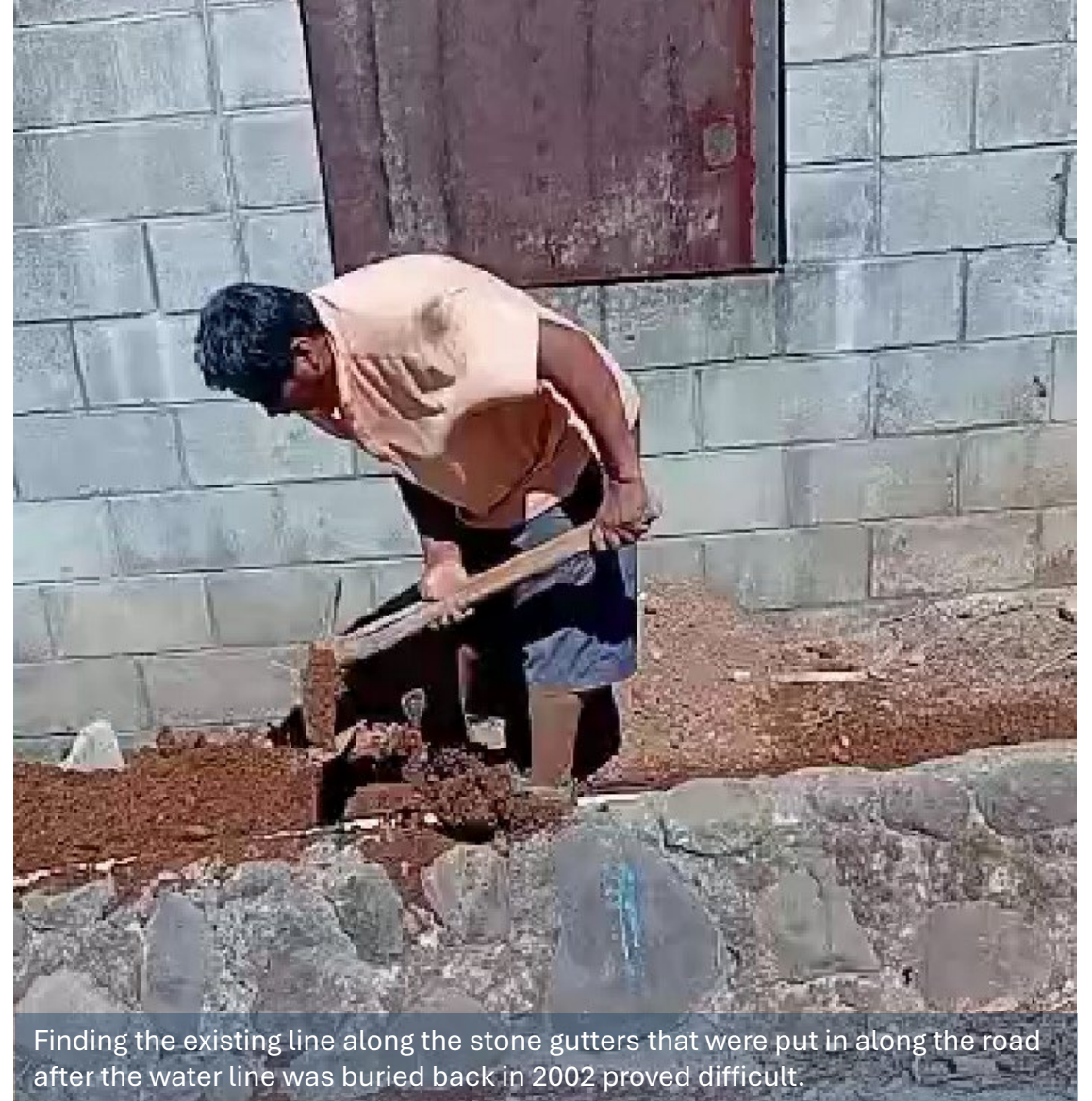
Impressive community participation so far to renovate the Marogil system.



New transmission line is connected and buried.



Trenching for the new transmission line; a deep trench is critical along the road.



Finding the existing line along the stone gutters that were put in along the road after the water line was buried back in 2002 proved difficult.



The water distribution line for the Marogil system runs parallel with the excess water line running from the Marogil storage tank to the Boledor 2 storage tank.



The interconnection trenches from Marogil to Boledor 2